



**TechnoHub**  
Engineering Solutions

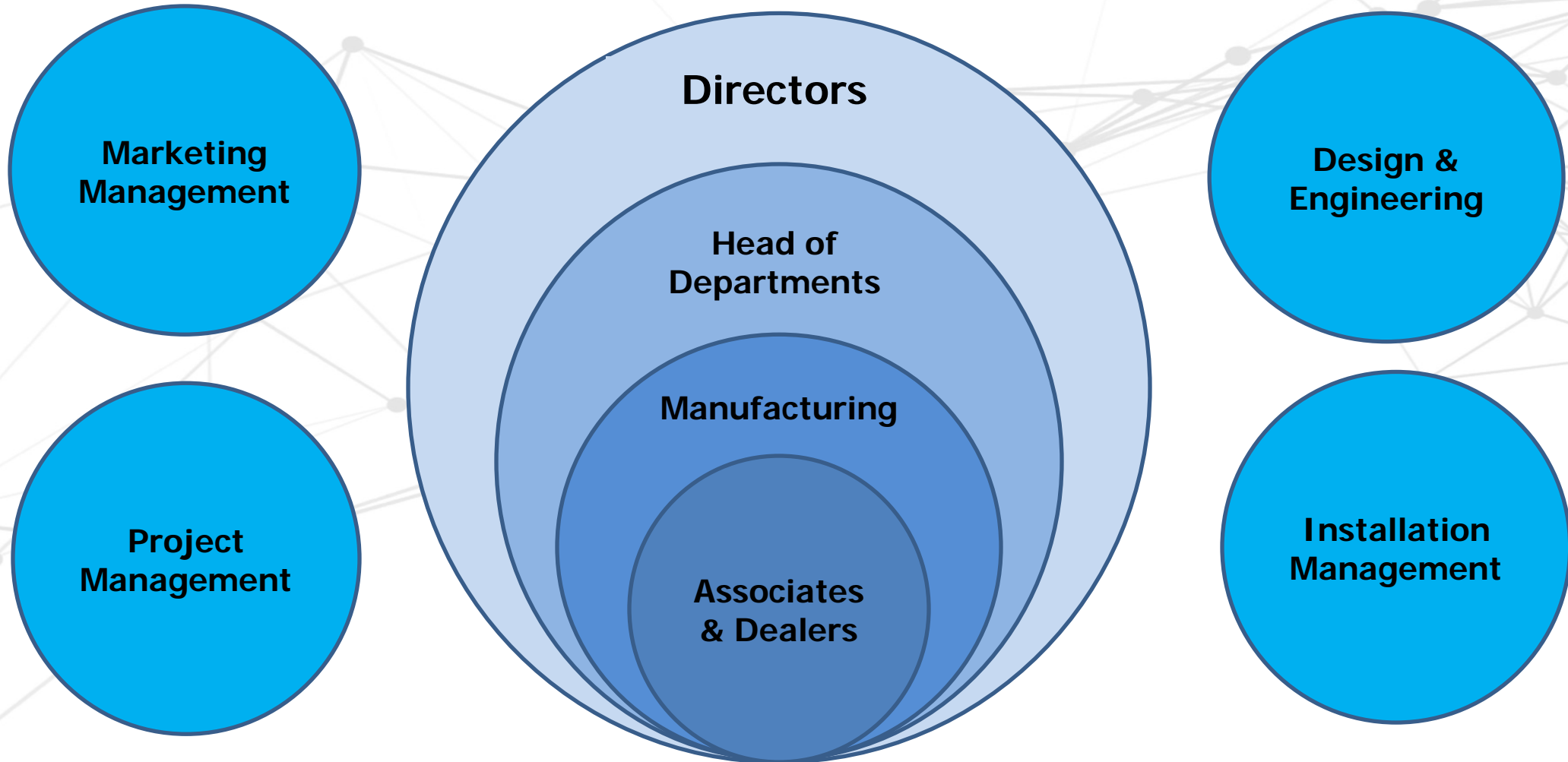
[www.setechnohub.com](http://www.setechnohub.com)

# ABOUT SE TechnoHub

- SE TechnoHub is involved in continual improvement of the health of any industry thus providing optimum solutions to its customers to meet the environment norms, reduction of Manpower, Automation of Process & Production, Sustainable Solution & Turnkey Project Management
- Ably aided by resources, capacity and experience to meet total customer requirements.
- This is all backed up by an outstanding service and support program– including installation and commissioning, equipment monitoring, emergency repairs, on-site or in-shop servicing, engineering consultancy, operational & maintenance of the plant, customer training and asset management expertise.
- Immense experience & flexibility allow us to handle broad spectrum of customers/Industries.

Our Sister Companies are SD Airtech & Sri Durga Sakthi Engineering works

# OUR TEAM



# Vision & Mission



## Vision

To be one of the Best Project Management Company assisting continual growth of Customer Organisation

## Mission

To deliver sustainable solutions like reducing Industrial Emission, Reduce Manpower, Increase Productivity to Customers.



# Infrastructure

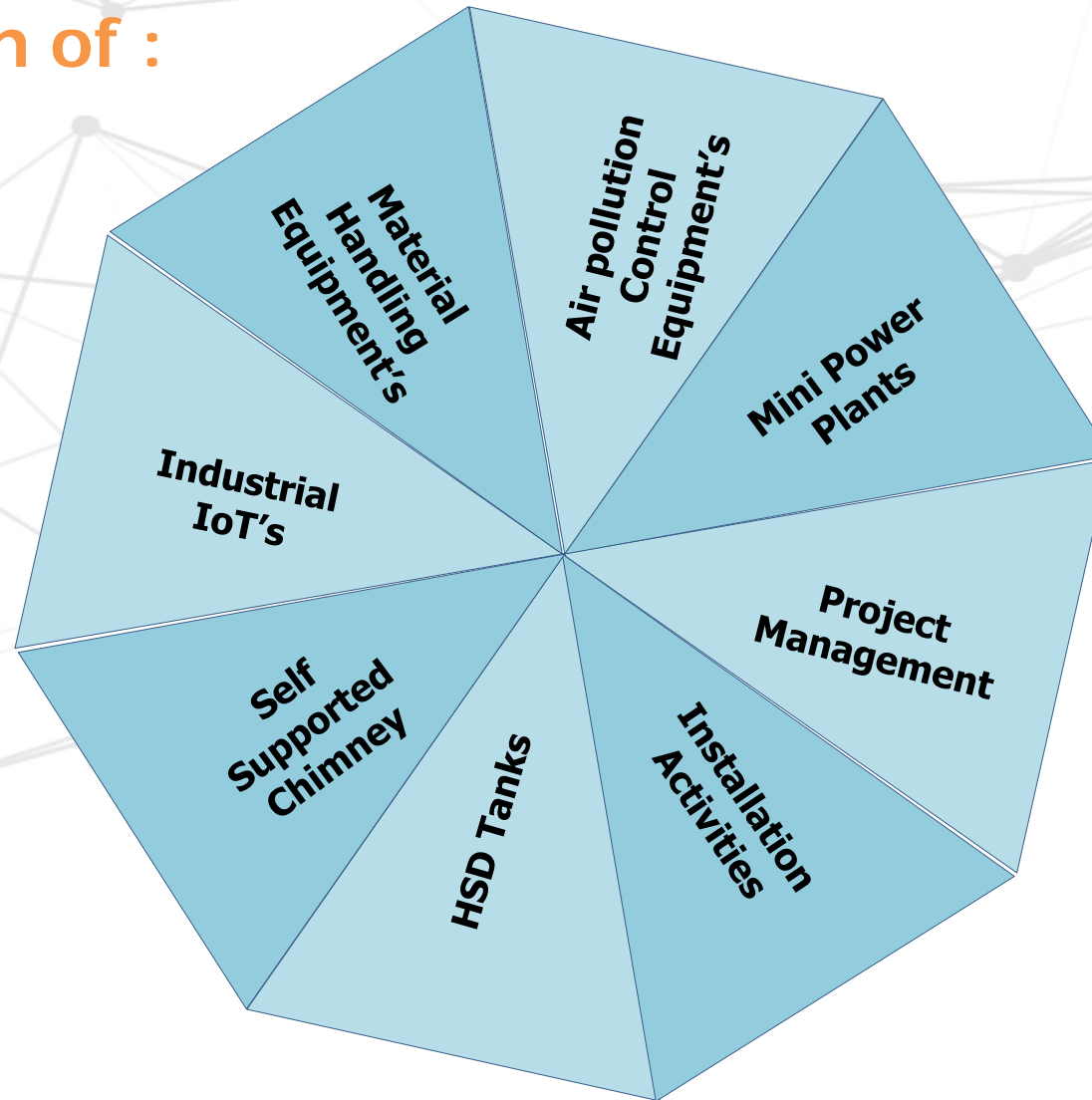


## Facilities

Office Space	1000 Sq.ft.
Manufacturing & Space	15000 Sq.ft.
Staff	09
Shop Floor Team	23
Site Support Team	18+
Power Available	100 HP

# COMPANY OVERVIEW

- SE TechnoHub is engaged in Design, Manufacture, Supply & Installation of :



## Fabrication of

SS Structural & Sheet Metal

MS Structural & Sheet Metal

GI Sheet Metal

PP/FRP



# COMPANY OVERVIEW

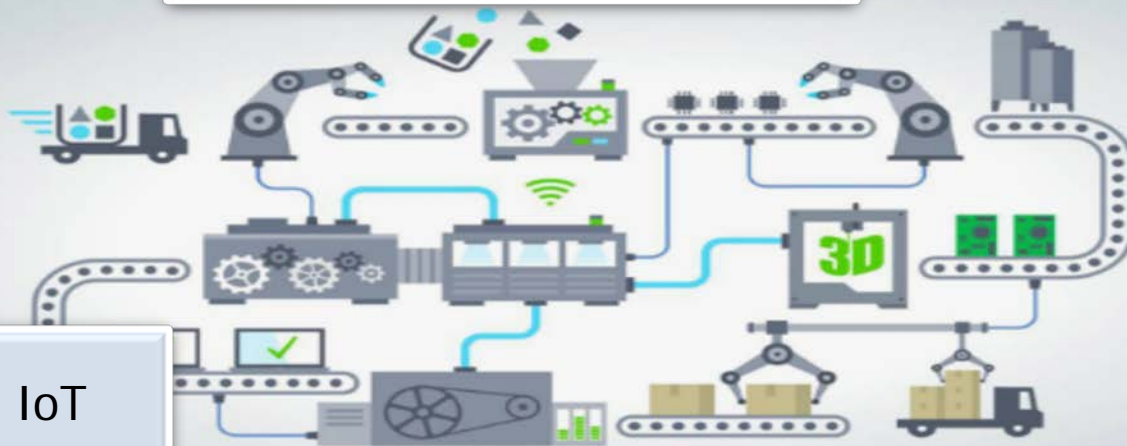
## Air Pollution Control



**TechnoHub**  
Engineering Solutions



Conveyor Systems



IoT



# COMPANY OVERVIEW

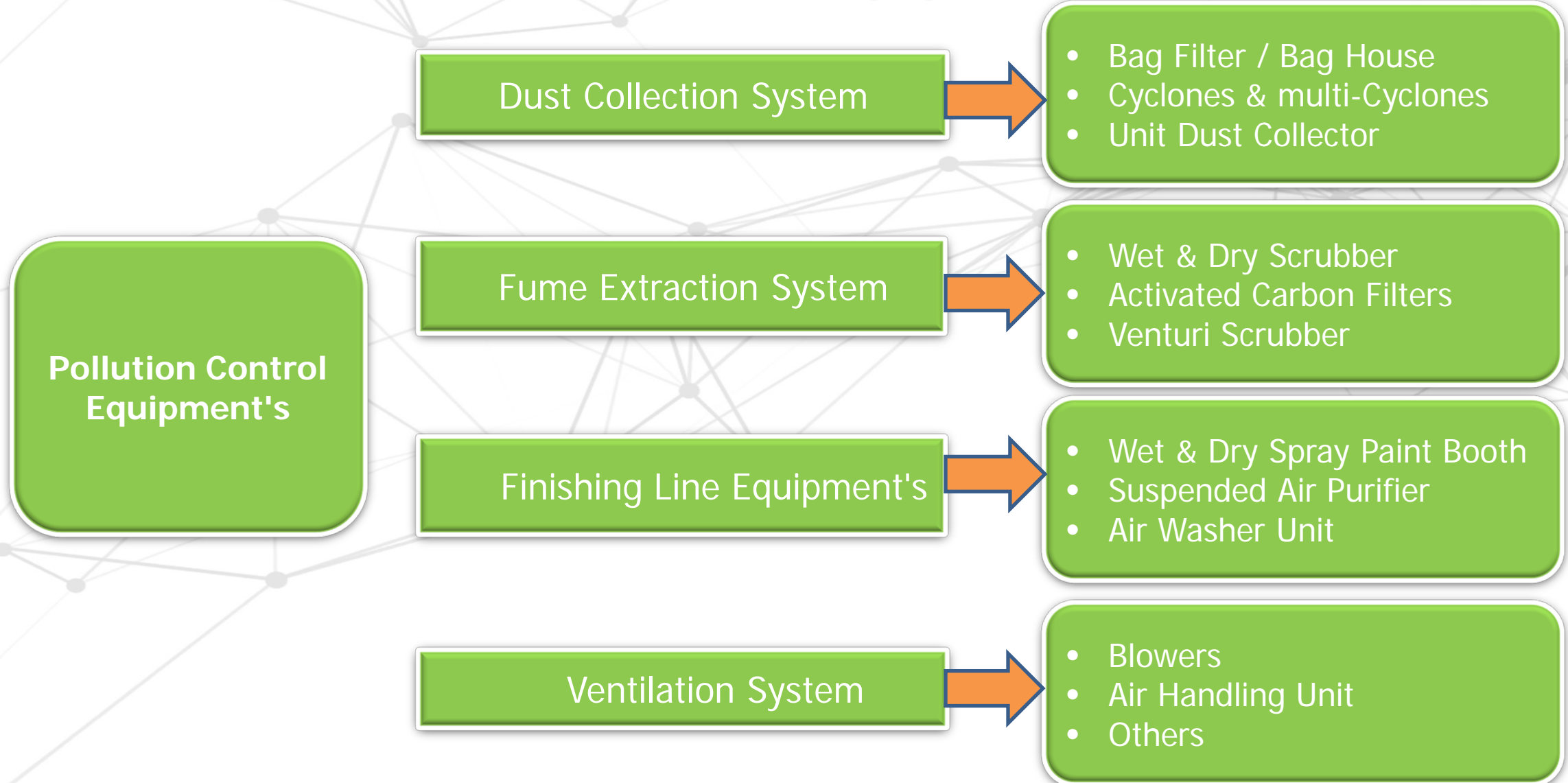


**TechnoHub**  
Engineering Solutions





# Products - Air Pollution Control Equipment's



# Products - Conveyors

Modular Conveyor System for  
Automotive, Food Packaging  
Industries



- Belt Conveyor
- Roller Conveyor
- Wire Mesh Conveyor
- Chain Conveyor
- Slat Chain Conveyor
- Modular Belt conveyor
- Assembly Lines,
- Sub Equipment's

Material Handling Equipment's



- Shuttle, Dolly's, Trolleys & Bin Rack,
- Pneumatic & Motorized Lifter.
- Pick & Place, Gantry Systems

# Products - IoT

## Domains

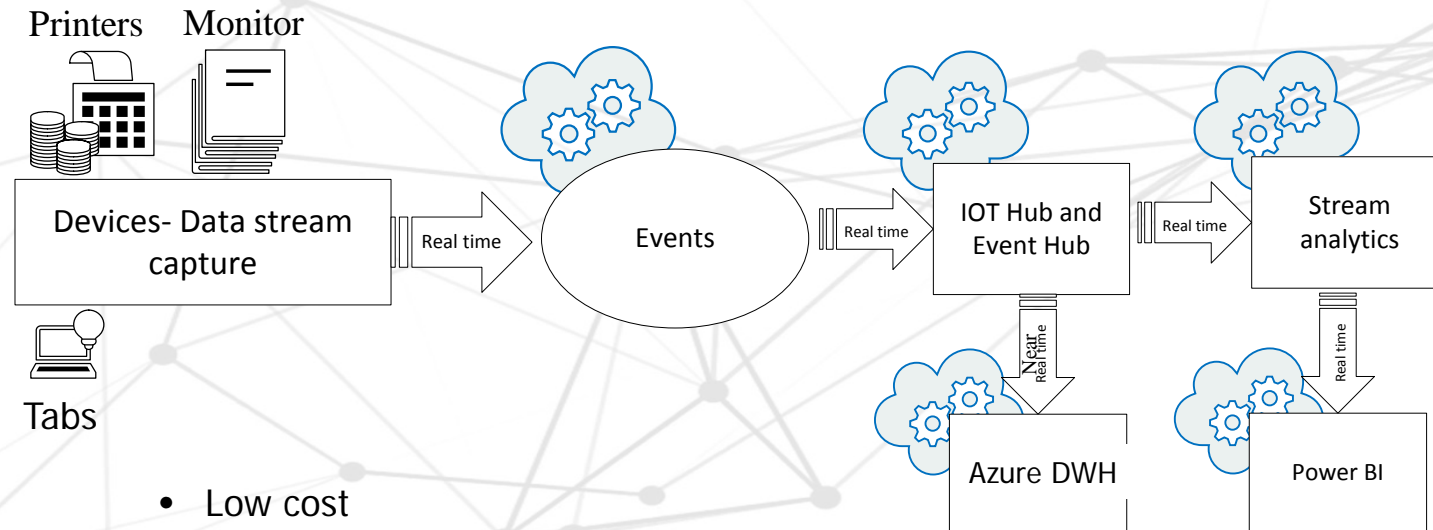
- Retail – Supply Chain & Distribution
- Utilities
- Manufacturing
- Pollution Control
- Home Automation
- Smart Cities
- Farm Productivity / Agriculture

## Capabilities

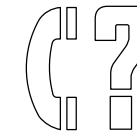
- IoT setup and development based on Domain and industry standards (Brown field and Green field)
- Database design for Device data using Symmetrical Multi processing and Massively parallel processing appliance (SQL DW, Azure DW) to process hi-velocity streaming data
- Data Load and Ingestion (Sensors & PLC Data can be ingested)
- Reporting and Dashboards Platform Power BI web and embedded, SSRS, PPS, SharePoint, Azure ML etc
- Automated Alerts in the case of anomalies / exceptions and thresholds identified by predictive models met.



# IoT - Implementation - Data integration to data capture, reporting and analytics



- Low cost
- Pay as you go
- Easy to monitor
- Integration with Existing DW and reports
- Critical Alerts
- Big data integration Spark and HD insight Hadoop data source
- Fast in-memory technology



Customer Service  
Real time

# Pollution Control across industries:

## Connected Devices and a more effective AMC



- The client was a air-pollution control solution provider and worked with 100s of top companies across Textile, Cement, Lead-Recycling, Iron & Steel as well as Mining.
- Their current solution involved on average 100-150 site visits by engineers per client per year
- There was no proactive identification of anomalies and issues got escalated quickly which meant lot of customer heartburn and churn



- We delivered a connected IoT solution that captured data from key sensors / PLCs and streamed the data into a MS Azure DWH
- This data was then processed into Power BI dashboards and also had dozens of alerts setup based on client's understanding of key triggers
- Proactive analysis of historical failures resulted in an intelligent system that proactively identified issues and alerted both client and site-head
- Intelligent Dashboards delivered on PC and Mobile Platform with rich visualization and charts

The Client is an Air Pollution Control solution provider and work with dozens of large manufacturing and utilities companies across India.



- Real-Time Alerts that provide visibility to key issues and help resolve issues proactively
- Rich visualizations and dashboards result in overall visibility to unit health
- 15% reduction in site visits by Client Engineers QoQ and expected further reduction in the coming quarters
- Rich data availability to be used for better planning of production and also for compliance purposes

# Products

## Mini Power Plant

- Thermal Power Plants
- Technical & Project consultancy services from Concept to commissioning
- Operation and Maintenance
- Turnkey execution (EPC) of small and medium sizes using coal & biomass of various kind including cashew nut shells, palm waste etc.
- Steam boilers – low pressure and power boilers.
- Balance of Plant (BOP) systems for Thermal power plants such as Coal/Biomass preparation and conveying systems, Cooling towers, Ash conveying systems, Water treatment plants etc.
- Electro Static Precipitators for flue gas emission control in boilers.

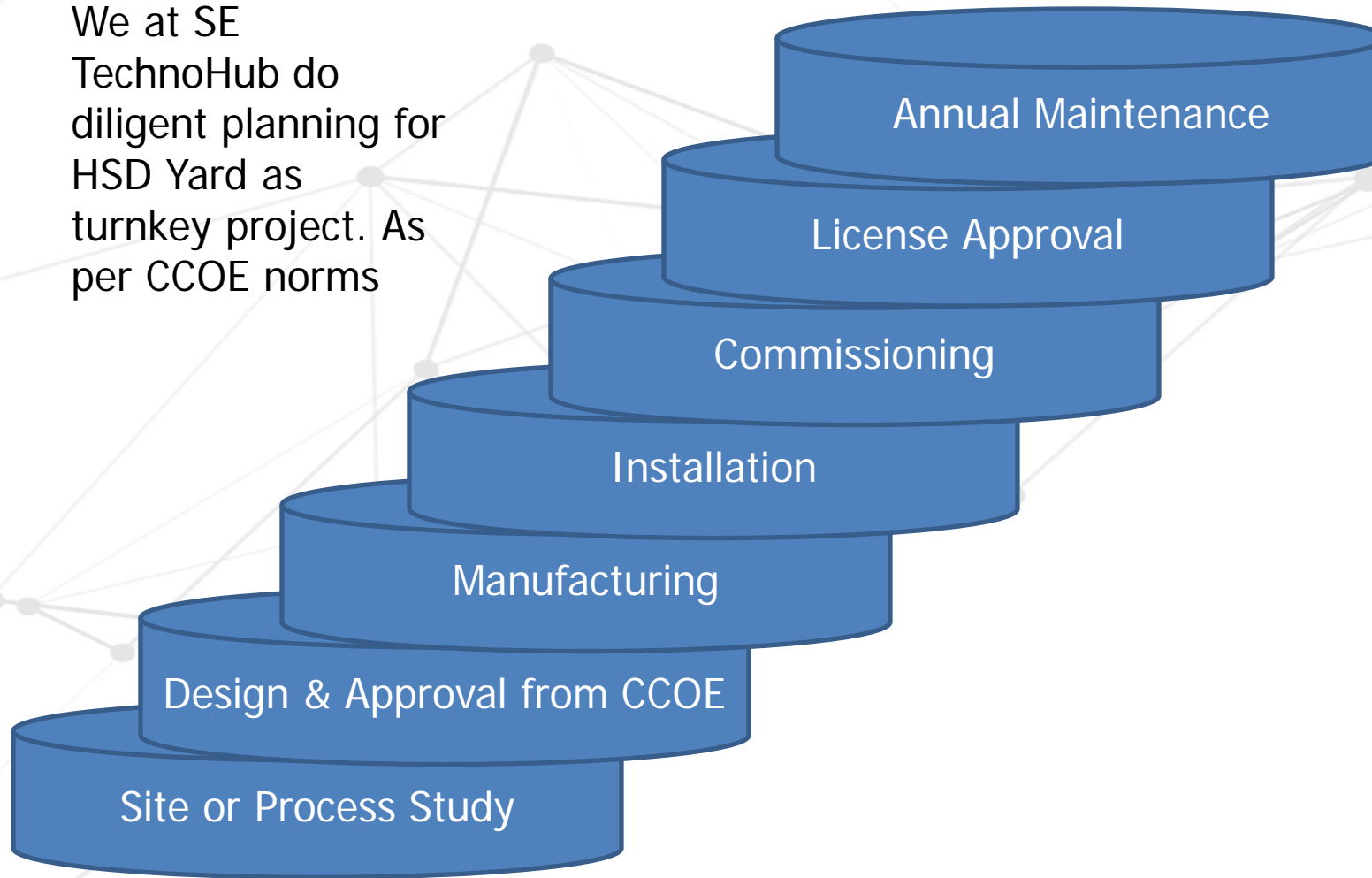
## Achievements

- Executed 8 power plants of 6 MW to 12 MW capacity on Turnkey basis.
- Provided Technical consultancy, detailed engineering and project management services for more than 40 power plants across our country.
- Has more than 30 years of hands on experience in various aspects of Power projects including design, detailing & execution of power projects of various kinds.



# Products, HSD Yard

We at SE TechnoHub do diligent planning for HSD Yard as turnkey project. As per CCOE norms



Annual Maintenance supported by our customer support team.

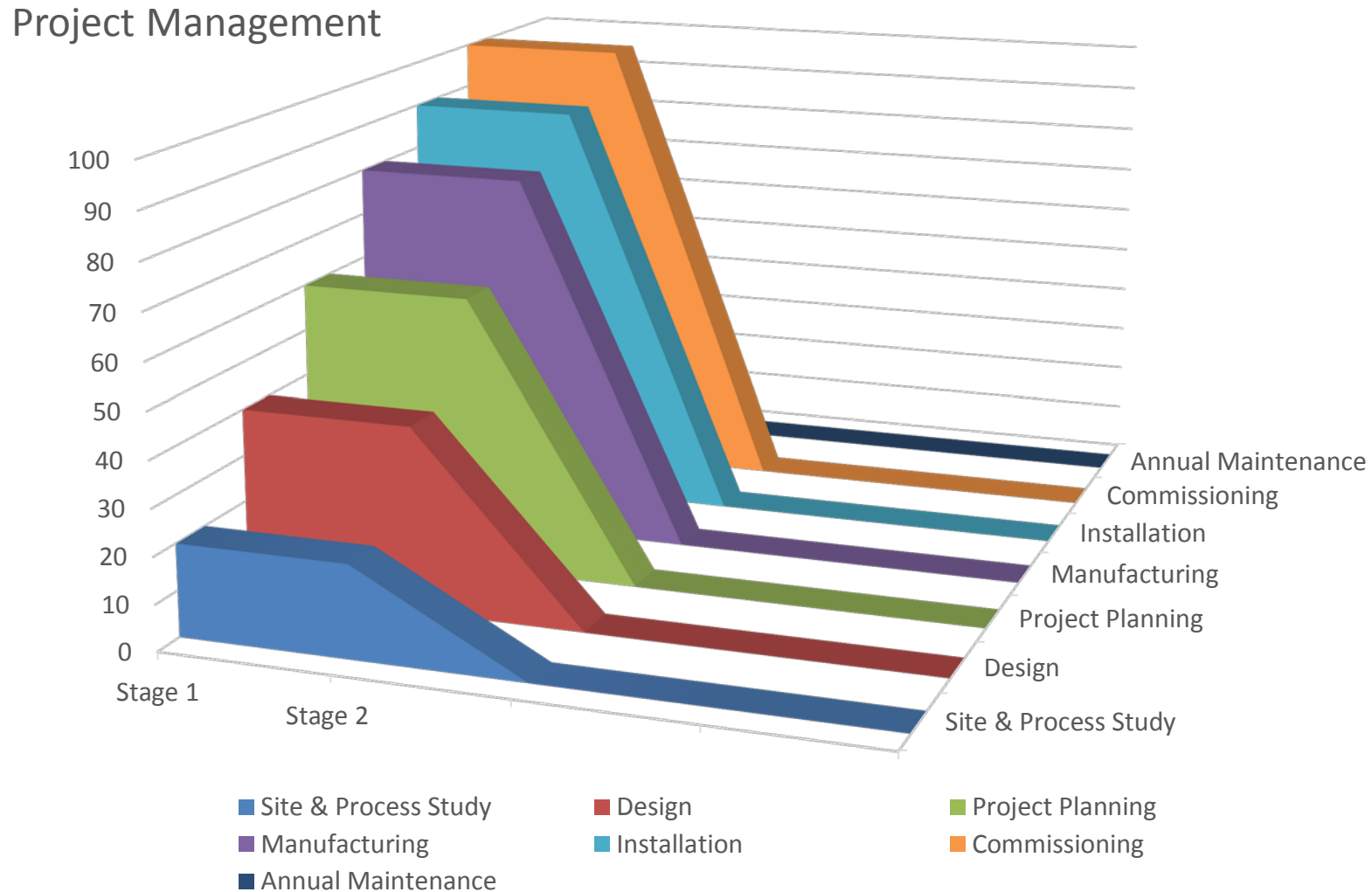
License approval from all department as per Norms

Installation & Commissioning report along with Operating Manual.

Feasibility report for critical cases

# Mapping, Project Management

We at SE TechnoHub do diligent planning of projects to offer turnkey solutions in a shortest cycle time



# Our Installation/Products



## **Product : Dust Collector**

1. Company : SKF Bearings

Material : Rubber

Place : Nanjangudu, Mysore.

2. Company : Evircor

Material : Paper Dust

Place : Peenya, Bangalore.



# Our Installation/Products



Company : Indian Bureau  
of Mines

**Product : Scrubber**

Material : Chemicals

Place : Peenya,  
Bangalore.

# Our Installation/Products



1. 75 HP Exhaust Blower  
Company: Orientbell.
2. 25 HP Supply Blower with  
Ventilation System  
Qty : 2 Nos  
Project: Mangalore Power  
Project  
Company: Bfl



# Our Installation/Products



- Product : HSD Tank.
- Company : SKL Techpark
- Place : Devanahalli, Karnataka.



# Our Installation/Products



- Product : CS Tank.
- Company : Boruka
- Place : Mysore, Karnataka.



# Our Installation/Products



- Product : Self Supported Chimney(MS)
- Company : ITC
- Place : Devenahalli

- Product : Self Supported Chimney
- Company : Boruka
- Place : Mysore

# Our Custom Engineered Hot Press Wood Working Machine

## Hot press Machine

Design & developed From Concept for Custom requirement

Aiding : Lamination On Both sides of Ply wood

Pneumatically Controlled rollers used to roll & Press for different type of Wood thickness.

Electrical : Thyristor controlled with temperature controller, infra red Quartz Glass Heating System .

Project completion : 6 weeks





# Our Round Belt Conveyor for parts Movement

Round Belt conveyor

Aiding : Auto Assembly Line , From CNC Grinding machine to Vibrator.

Criticality : Avoiding Damage to O D ground Component

Speed : 6 Mtrs / Minute

Control : VFD Control

Sensor : Proximity sensor At Entry & exit





# Our Installation/Products

Over view of 6 MW Independent power plant based on 100% deoiled cashew shell.

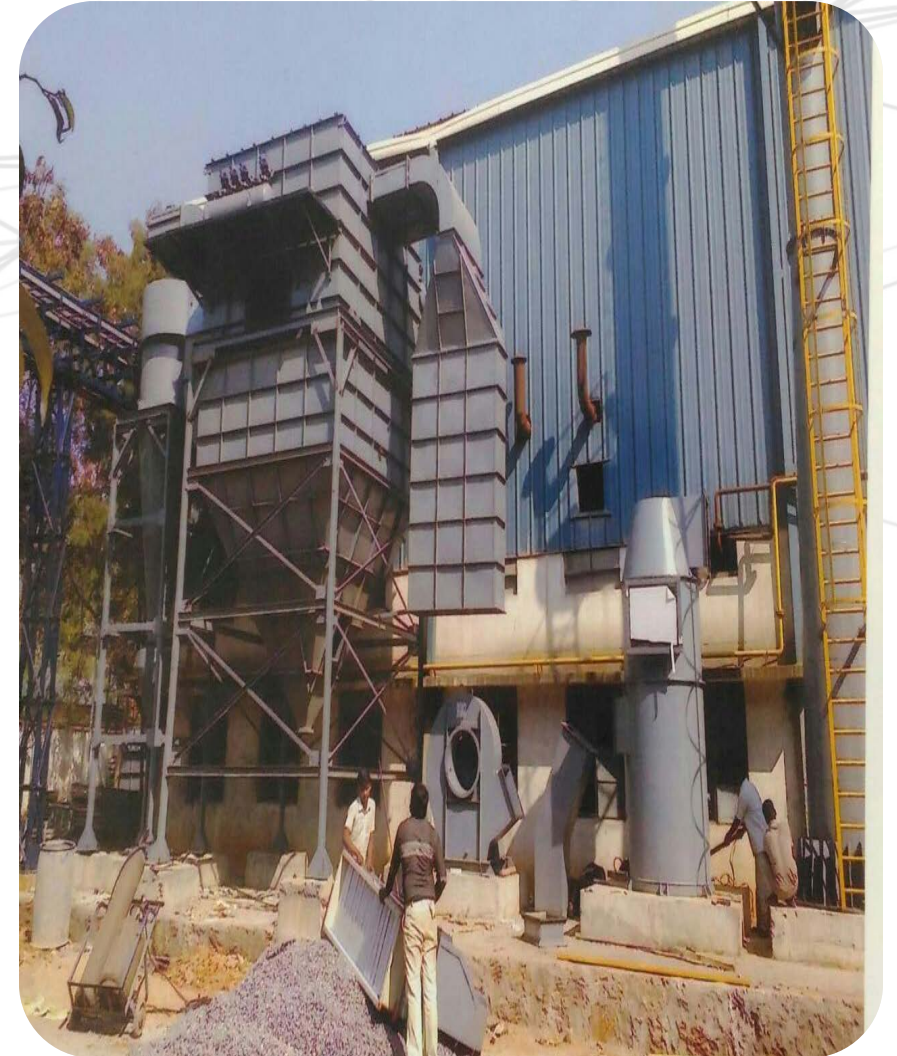
Company: M/s. Rajkumar Impex Pvt Ltd., Tuticorin in the year 2011.





# Our Installation/Products

- SS & MS Structural & Sheet Metal Fabrication
- Installation Activities





# Fabrication



# Our Esteemed Clients





**TechnoHub**  
Engineering Solutions

**Thank You**

Contact :

T: 080-6531 9903 | E: [projects@setechnohub.com](mailto:projects@setechnohub.com) | W: [www.setechnohub.com](http://www.setechnohub.com)

#478/59, Shed No 2, Hirandahalli Village, Bidarahalli Hobli, Virgonagar(P), Bangalore - 560 049